

Spreader Plate (Models 5112, 5113, 5114) - Mounting Instructions

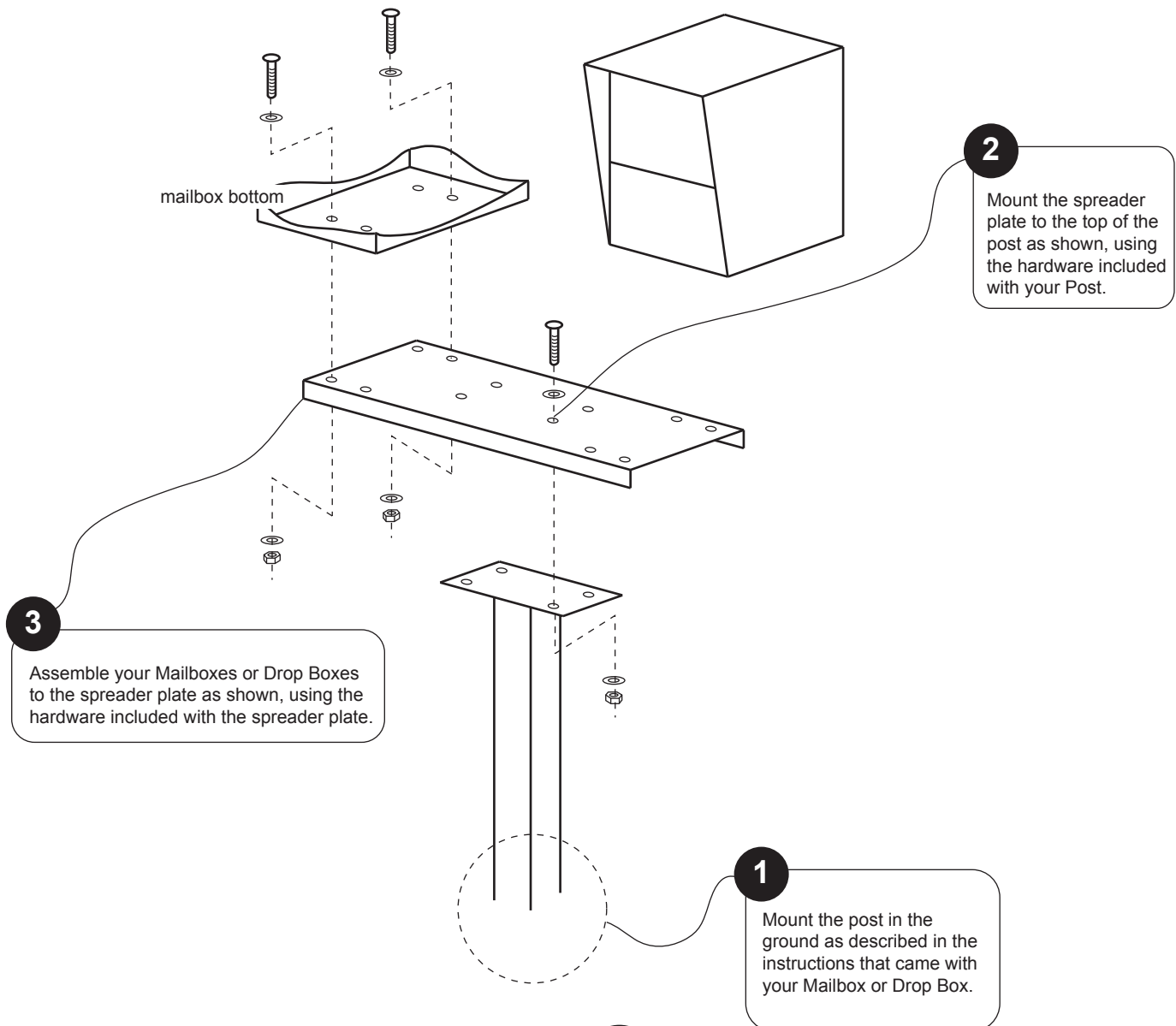
Thank you for purchasing this spreader plate accessory for your premium Mailboxes or Drop Boxes. We know you'll be satisfied with the years of service it will provide. If you have any questions about how to mount or use this spreader plate, or if you need any replacement parts, please call us directly at (800) 464-7491 or contact us at www.architecturalmailboxes.com.

Mounting your new spreader plate

Your new spreader plate is designed to be used with other Architectural Mailboxes products only. Please follow these simple steps to assemble the components of your mailbox system.



WARNING - Spreader Plates not for use with products from any other manufacturer - may collapse. Designed to support the weight of Architectural Mailboxes products only.



ARCHITECTURAL
MAILBOXES®